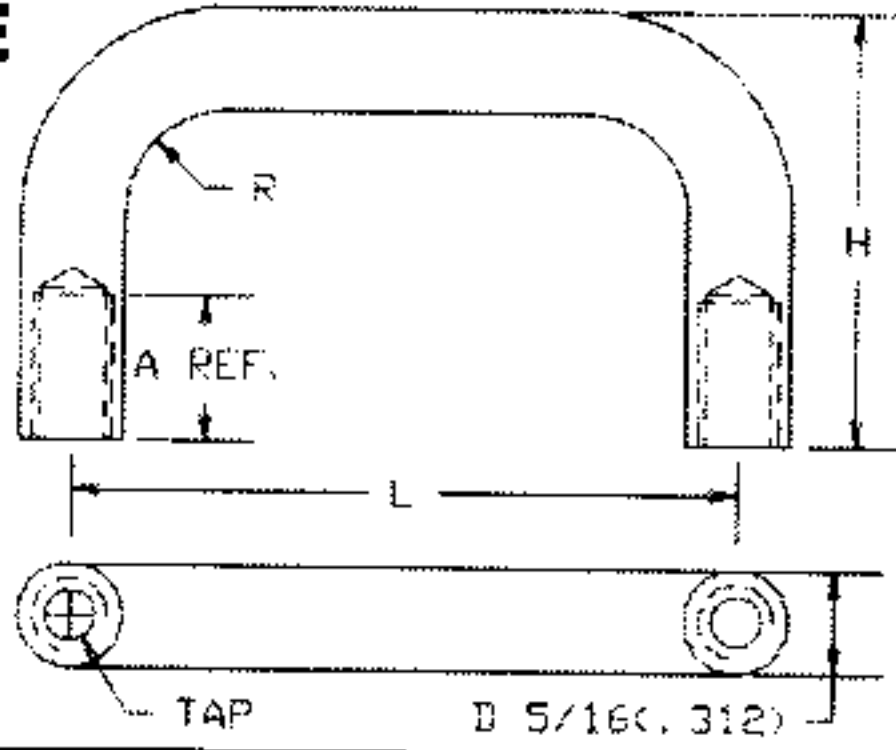


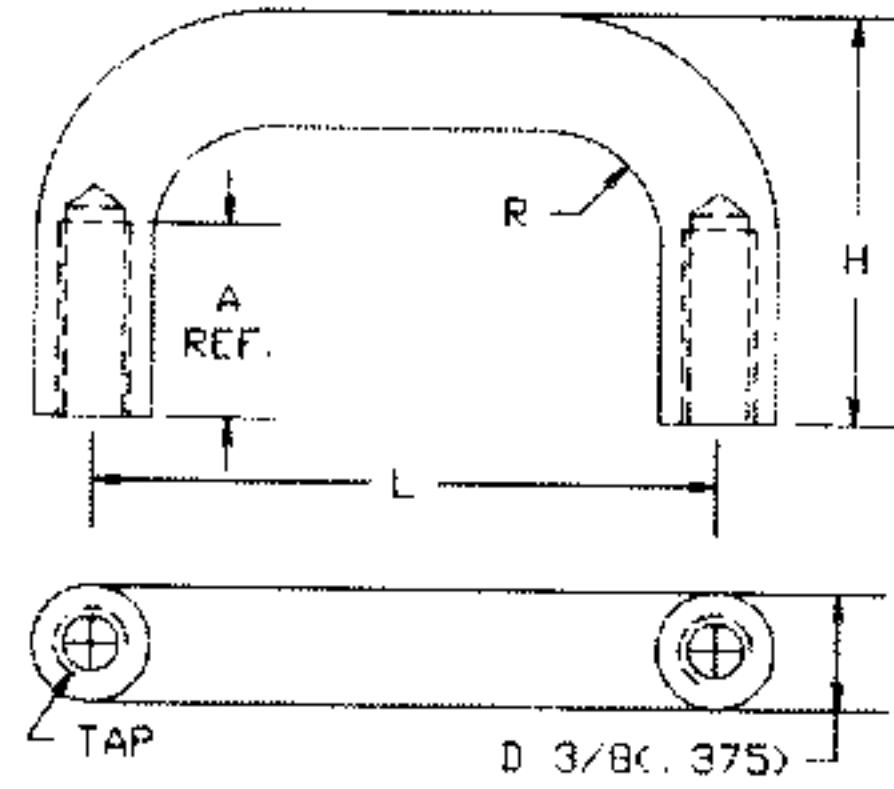
# HANDLES

## BRASS ROUND HANDLE

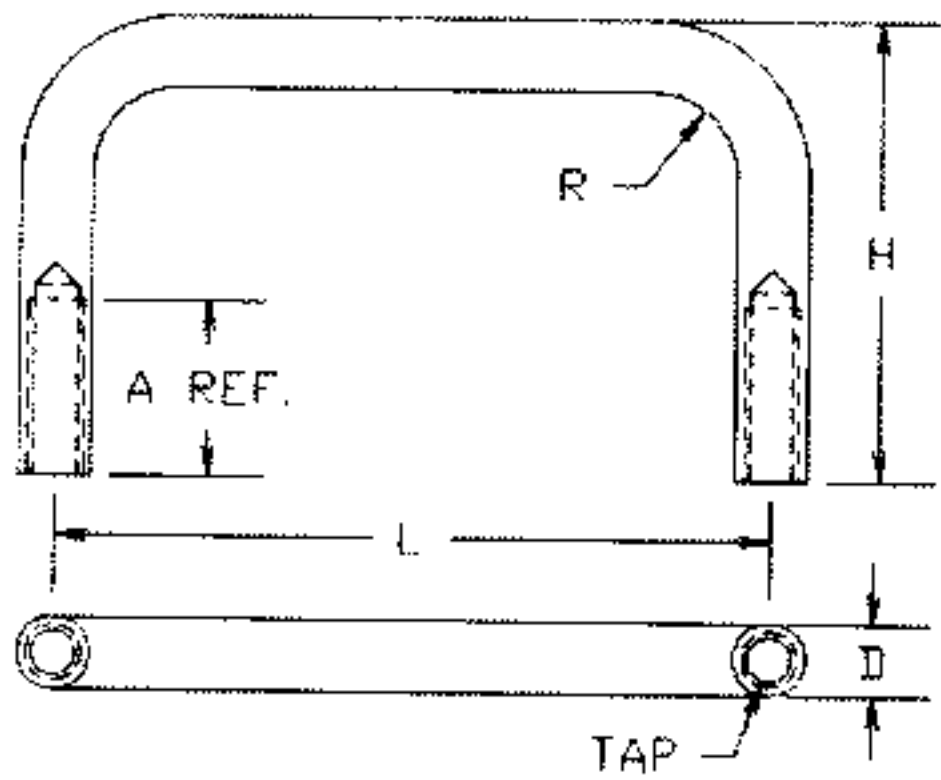


NICKEL PLATE	D	L	H	TAP	A	R
30-3209-1	.312	2.000	1.312	8-32	.438	.312
30-3210-1	.312	2.000	1.312	10-32	.625	.312
30-3205-1	.312	2.000	1.500	10-32	.625	.312
30-3216-1	.312	3.000	1.312	8-32	.438	.312
30-3215-1	.312	3.000	1.312	10-32	.625	.312
30-3220-1	.312	3.000	1.500	10-32	.625	.312
30-3230-1	.312	4.000	1.500	10-32	.625	.312
30-3235-1	.312	4.000	1.875	10-32	.625	.312
30-3225-1	.312	4.250	1.500	10-32	.625	.312
30-3240-1	.312	4.500	1.500	10-32	.625	.312
30-3245-1	.312	4.562	1.500	10-32	.625	.312
30-3250-1	.312	6.000	1.500	10-32	.625	.312
30-3255-1	.312	6.438	1.500	10-32	.625	.312
30-3260-1	.312	6.438	1.750	10-32	.625	.312
30-3265-1	.312	6.500	1.500	10-32	.625	.312
30-3270-1	.312	6.500	1.750	10-32	.625	.312

## ALUMINUM ROUND HANDLE

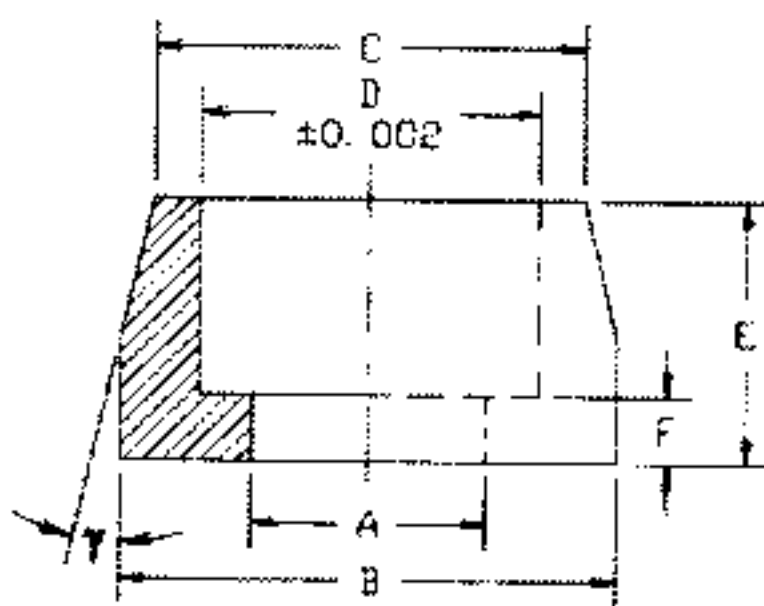


BLACK ANODIZE	SEMI-FROST ANODIZE	D	L	H	TAP	A	R
30-3305-11	30-3305-12	.375	2.000	1.312	10-32	.625	.375
30-3310-11	30-3310-12	.375	2.000	1.750	10-32	.625	.375
30-3315-11	30-3315-12	.375	2.500	1.750	10-32	.625	.375
30-3320-11	30-3320-12	.375	3.000	1.750	10-32	.625	.375
30-3325-11	30-3325-12	.375	4.000	1.750	10-32	.625	.375
30-3327-11	30-3327-12	.375	4.000	1.875	10-32	.625	.375
30-3328-11	30-3328-12	.375	4.000	1.875	12-24	.562	.375
30-3330-11	30-3330-12	.375	4.500	1.500	10-32	.625	.375
30-3335-11	30-3335-12	.375	4.500	1.750	10-32	.625	.375
30-3340-11	30-3340-12	.375	6.000	1.750	10-32	.625	.375
30-3345-11	30-3345-12	.375	6.438	1.750	10-32	.625	.375
30-3350-11	30-3350-12	.375	6.500	1.750	10-32	.625	.375



BRASS			ALUMINUM						
NICKEL PLATE	BLACK ANODIZE	SEMI-FROST ANODIZE	D	L	H	TAP	A	R	
30-3282-1	-	-	.156	.750	1.000	4-40	.380	.156	
30-3285-1	30-3370-11	30-3370-12	.156	1.250	1.000	4-40	.380	.188	
30-3286-1	30-3372-11	30-3372-12	.156	2.000	1.000	4-40	.380	.188	
30-3287-1	30-3374-11	30-3374-12	.156	3.000	1.000	4-40	.380	.188	
30-3292-1	30-3380-11	30-3380-12	.250	2.000	1.500	8-32	.560	.250	
30-3294-1	30-3385-11	30-3385-12	.250	3.000	1.500	8-32	.560	.250	
30-3295-1	30-3390-11	30-3390-12	.250	4.000	1.500	8-32	.560	.250	
30-3296-1	30-3395-11	30-3395-12	.250	6.000	1.500	8-32	.560	.250	
30-3275-1	30-3375-11	-	.375	4.000	1.375	10-32	.375	.375	
30-3276-1	30-3376-11	-	.375	6.000	1.375	10-32	.375	.375	

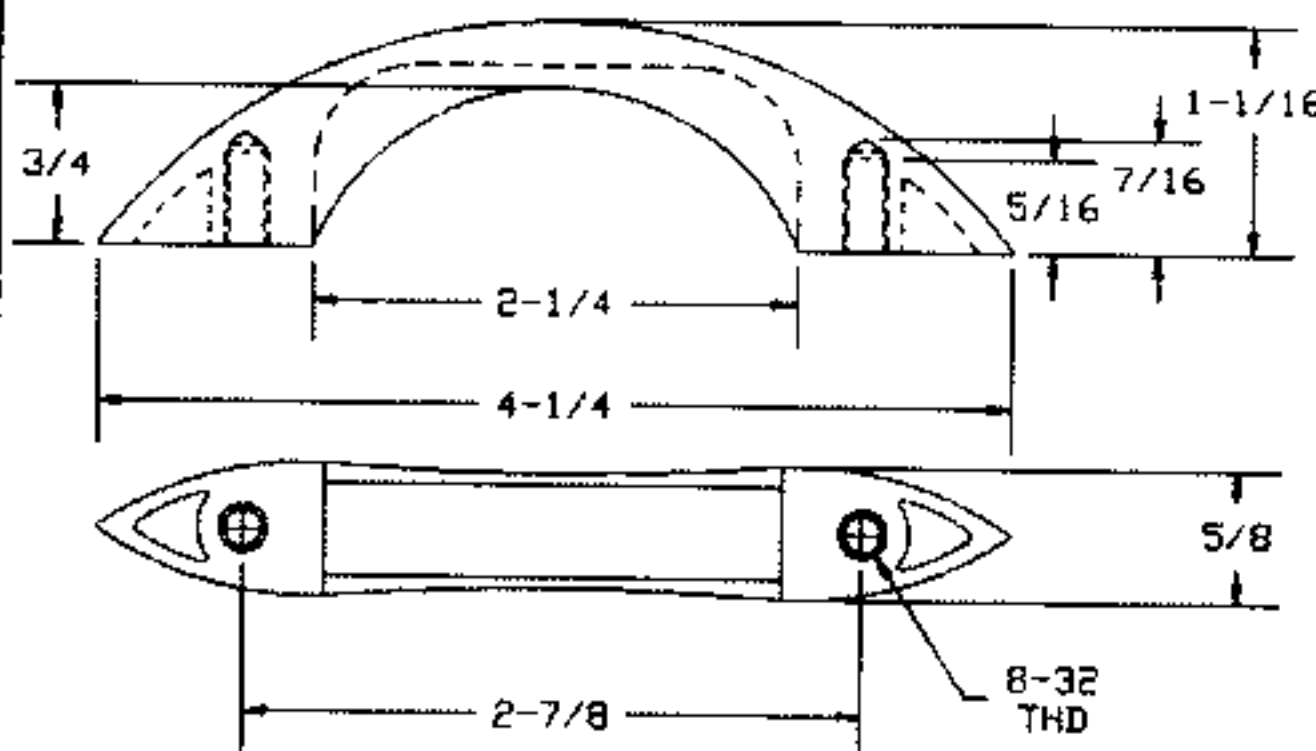
## FERRULES



BRASS			ALUMINUM								FOR HANDLE DIA.
NICKEL PLATE	BLACK OXIDE	SEMI-FROST ANODIZE	BLACK ANODIZE	D	A	B	C	E	F	γ	
30-3951-1	30-3951-2	30-3952-12	30-3952-11	.161	.116	.250	.200	.125	.047	22°	.156
30-3950-1	30-3950-2	30-3955-12	30-3955-11	.260	.204	.375	.320	.187	.062	16°	.250
30-3954-1	30-3954-2	-	-	.320	.221	.469	.406	.250	.062	13°	.312
30-3980-1	30-3980-2	-	-	.320	.221	.562	.406	.250	.062	30°	.312
-	-	30-3990-12	30-3990-11	.382	.250	.625	.469	.375	.093	30°	.375

## BAKELITE HANDLE 790-2260

BLACK MOLDED PHENOLIC  
Mounts with 8-32 screws - (not supplied).  
40 lb. max. load

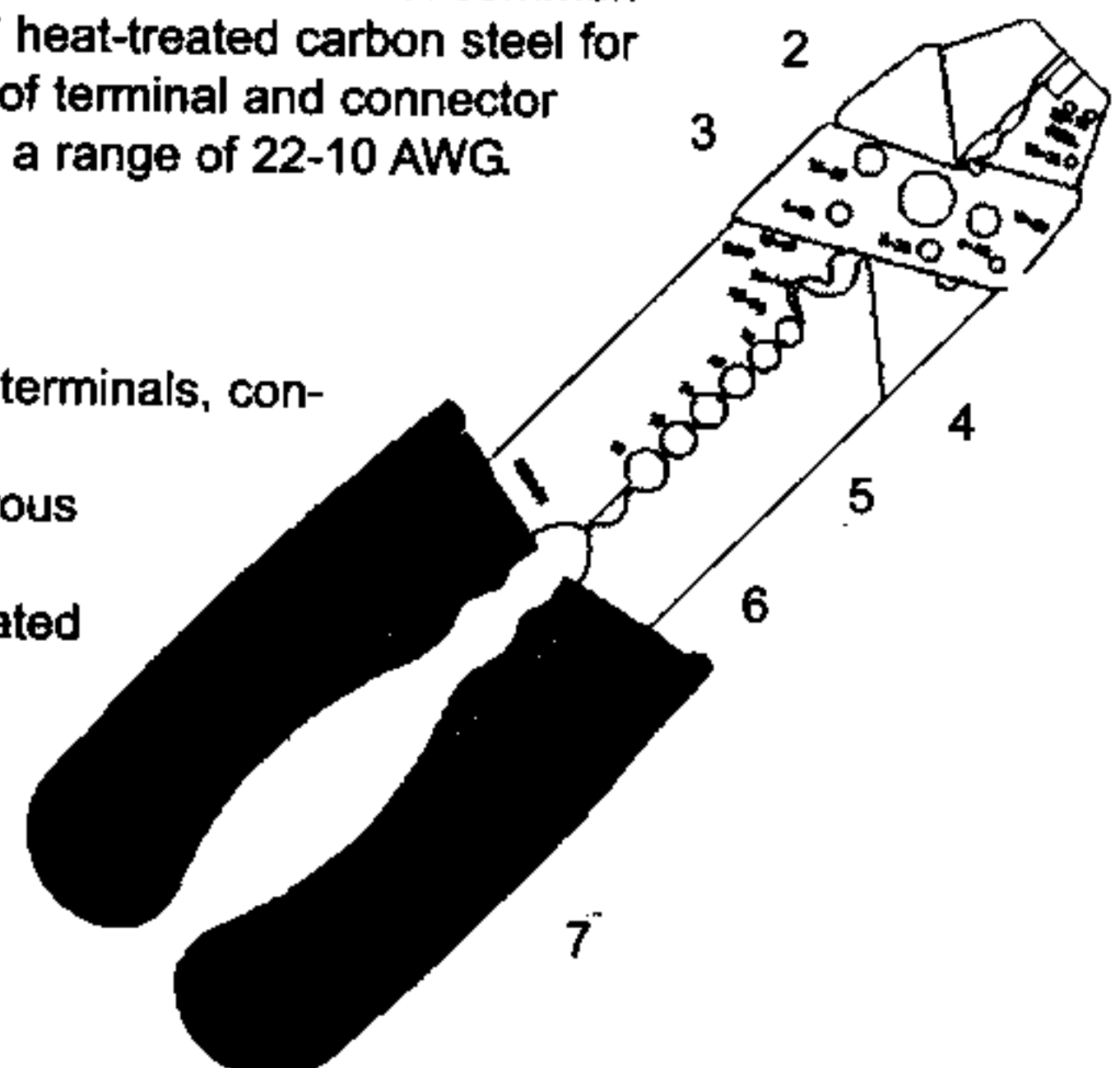


## CRIMPING TOOL 701-2860

A compact, high-quality tool designed to handle the six most common electrical wiring functions. Made of .125" heat-treated carbon steel for maximum durability. It handles a variety of terminal and connector styles, insulated and non-insulated, over a range of 22-10 AWG.

### FEATURES:

1. Anvil-type wire cutter.
2. Crimp dies for #22-10 AWG insulated terminals, connectors and closed - end connectors.
3. Cut-off dies for mild steel and non ferrous screws.
4. Crimp dies for #22-10 AWG non-insulated terminals and connectors.
5. Wire stripping stations.
6. Crimp nest for 7 and 8 mm ignition parts.
7. Cushioned, vinyl grips.



**CONCORD**